

Employees and staff recognition
at a fraction of the cost of a pay rise

A world of discounts is waiting.
Save big. Every day



Welcome to your company discount hub

Enjoy discounts, rewards and perks
on thousands of the brands you love
in a variety of categories:

- Travel
- Entertainment Tickets
- Motoring
- Restaurants
- Electronics
- Health and Wellness
- Clothing
- Beauty and Spa
- Local Deals
- Insurance
- Education
- Sports & Outdoors

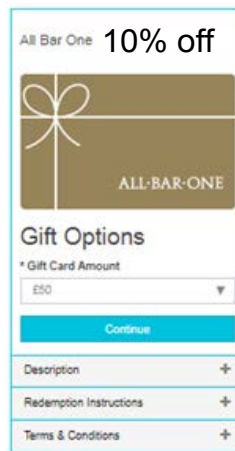
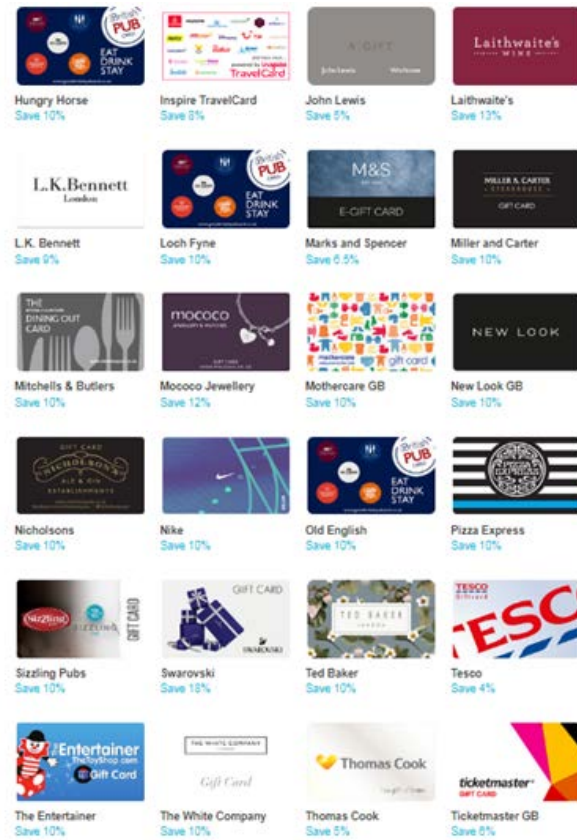


It's easy to access and start saving!

- 1) Go to <https://perksdirect.benefithub.com/>
- 2) Enter your referral code.
- 3) Complete registration.
- 4) Start saving !

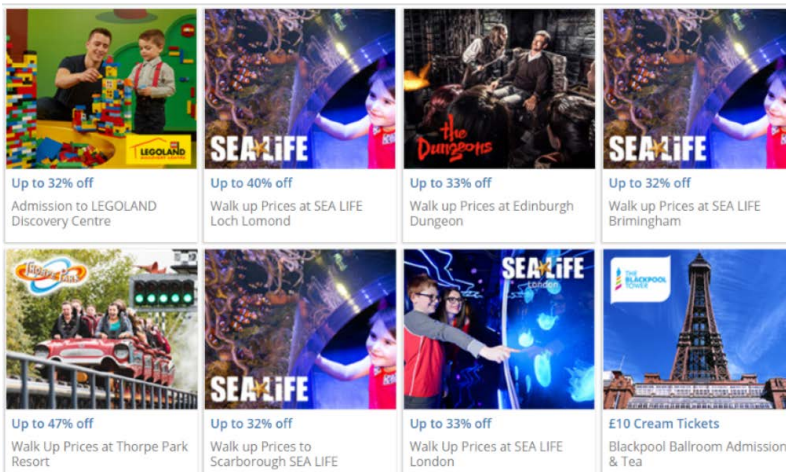
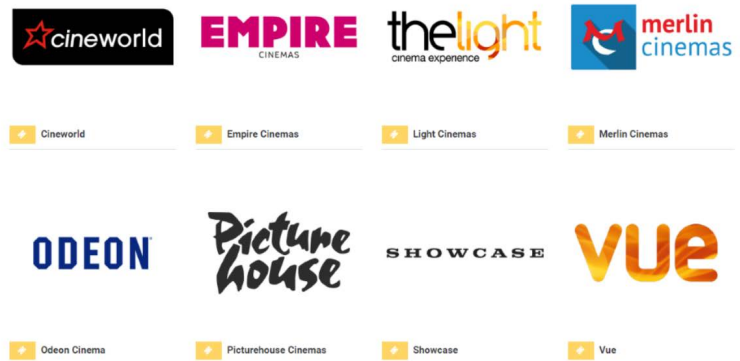
Questions? Call 01895 540938 or email info@perksdirect.co.uk

All the top brands under one roof



"Big savings off major high street retailers"

"Big savings off major cinemas"



"Big savings off major theme parks and days out, including walk up deals"

Up to 50% discount in thousands of restaurants

Ask if your staff qualify for a 12 month membership. **£100 free today!**



Instantly treat your employees or customers

With dozens of articles being written every day on how to improve employee productivity and loyalty the answer is clear, make them happy. Treating your employees well is the secret to unlocking their true potential and creating long term loyalty. A recent business review analyses showed happy employees were almost a third more productive than their counterparts.

A cloud and mobile based platform that allows you to instantly send Treats to your employees or customers.



CAFFÈ
NERO

Millie's
COOKIES

M&S
EST. 1884

amazon.co.uk



CSR made simple with **Free** donations

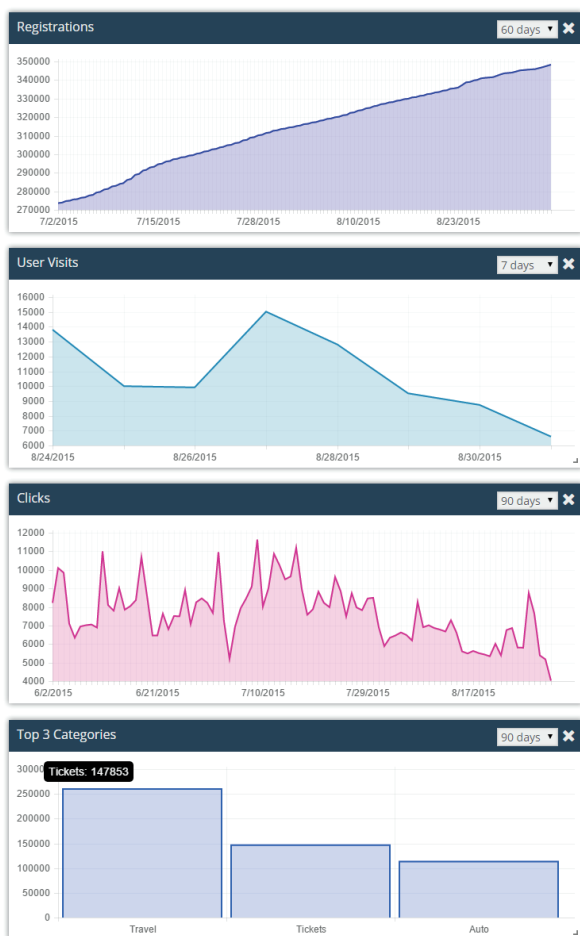
Impact is a specialist fund raising facility enabling Companies and Employers to service their Corporate and Social Responsibility with the ability to raise additional funds for dedication to good causes whilst raising Company Brand and Awareness. **There is no cost to the user.**

The funds can provide support to local community projects and charities to benefit others, or address wider health or environmental issues like tree replanting.

By registering with Impact on our fully PCI compliant platform, the Perks Direct Users will obtain additional funds for donations to charity at no cost to themselves.



Easily Measure Your Success



Real time reports on dozens of data points:

- ✓ Registrations
- ✓ Logins
- ✓ Offers Clicked
- ✓ Vendor Performance
- ✓ Category Performance
- ✓ Client Overall Performance
- ✓ Enrollment Data

Only see what matters to you. You choose which reports appear on your dashboard.

Select any period to cover.

All reports are exportable to excel with one click.

Comprehensive Support

All Clients and users receive live agent support to answer any questions. We also have a comprehensive knowledge base (FAQs), updated daily with help articles, forums and more.

Through our knowledge base, users can also submit feedback and ideas, on which other users can vote.



Want to find out more?

01895 540938 or email
info@perksdirect.co.uk